

# Functions: Lesson 1

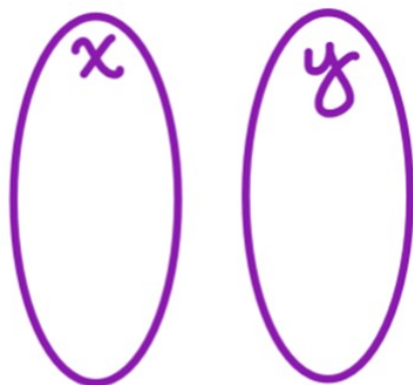
## What is a Function?: Notes

Name: \_\_\_\_\_

**Relation:** Two variables are \_\_\_\_\_ to each other.

Shown by...

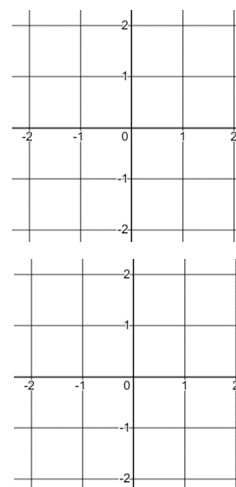
Mapping:



List of Points:

{( ), ( )}

Graphing:

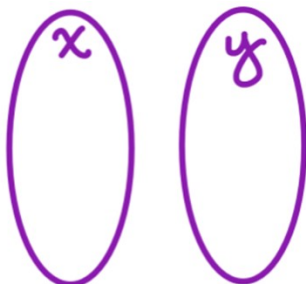


**Function:** A special type of \_\_\_\_\_ in which each \_\_\_\_\_ value corresponds to exactly \_\_\_\_\_ y value.

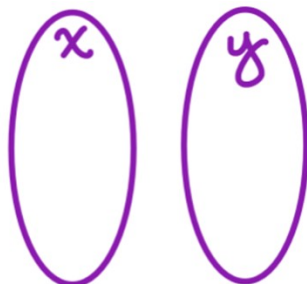
Every time I put in the same \_\_\_\_\_, I always get the same \_\_\_\_\_.

**Mapping:**

Function:



Not a Function:



**Points:**

Function:

(4, -2), (-2, 7),  
(7, -2)

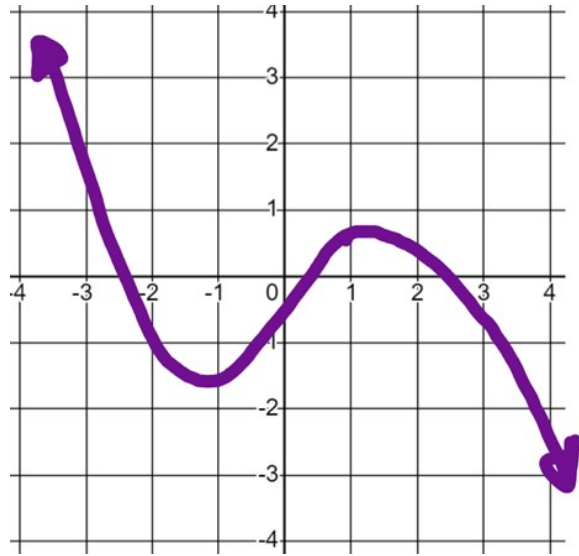
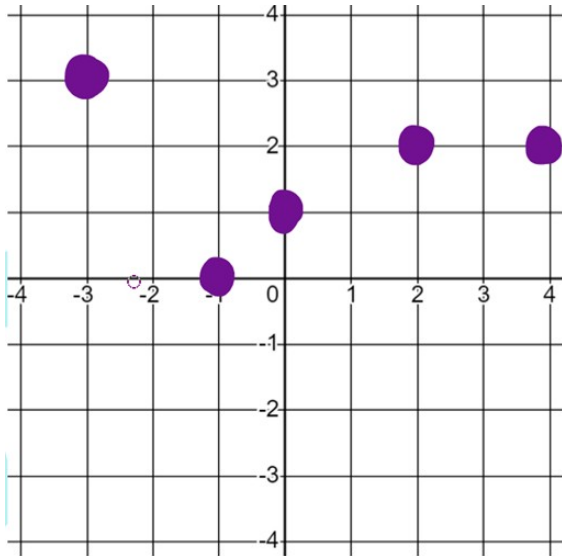
Not a Function:

(3, 4), (5, 4),  
(3, 0)

## Graphs: Vertical Line Test

Anywhere I put a \_\_\_\_\_ line, I can hit the graph no more than \_\_\_\_\_ time.

### Functions:



### Not functions:

